

Dental Model

Dental Model for High-Accuracy and Strength

LuxCreo's DMR is a 3D printable rigid material designed to create highly accurate dental models with low shrinkage. Perfect for thermoforming, DMR is designed to produce models for crowns, bridges, implants, and aligners.



Strong



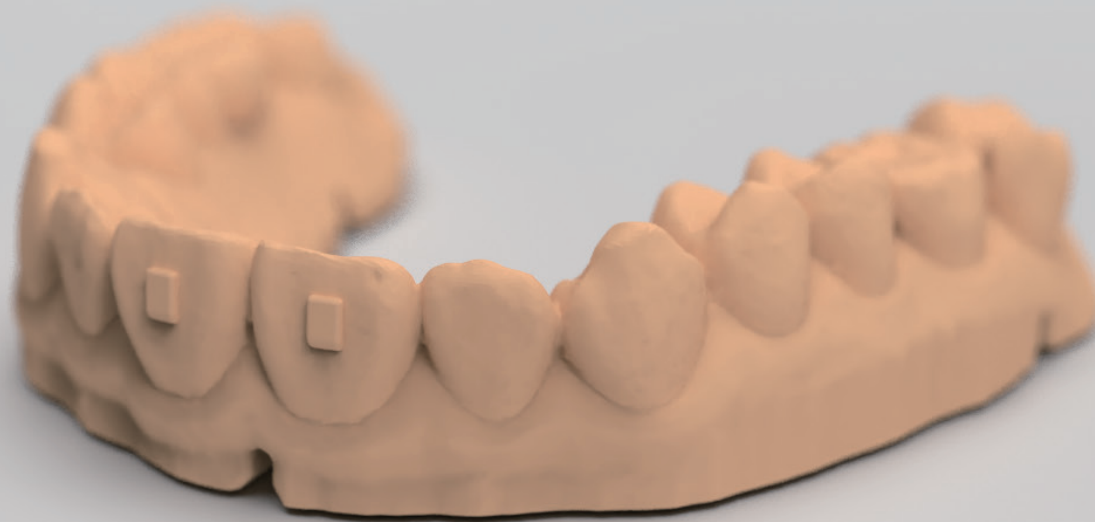
Accurate



Fast Printing



Smoothness



DMR

DMR

Dental Model Resin 1-LCD

Luxcreo's Dental Model Material DMR is a light-curing resin for the 3D printing of orthodontic and dental models for use with LCD printers.

Composition: methacrylate, photo-initiator, inhibitor, and pigment

Tensile Properties, ASTM D638		Metric	U.S.
Tensile Modulus		2750 MPa	398.8 ksi
Ultimate Tensile Strength		50 MPa	7.3 ksi
Elongation at Break		3.2 %	3.2 %
Impact Properties, ASTM D256		Metric	U.S.
Notched Izod (Machined), 23°C		19.1 J/m	0.36 ft-lbf/in
Flexural Properties, ASTM D790		Metric	U.S.
Flexural Strength		100 MPa	14.5 ksi
Flexural Modulus		3650 MPa	529.4 ksi
Thermal Properties, ASTM D648		Metric	U.S.
Heat Deflection Temperature @0.455 MPa/66 psi		91.8 °C	197.2 °F
General Properties		Metric	
Shore Hardness, ASTM D2240		86D	
Density, ASTM D792		1.1274 g/cm ³	

These data were determined in accordance with ISO and ASTM standards and are pursuant to LuxCreo Quality System. This document is valid without signature.

These data are typical values and were determined through testing on printers which are validated for use with LuxCreo's products. Mechanical properties will vary based on machine, part orientation, machine type, machine power, post curing of the printed parts, and cleaning. See product guide for post-processing procedure and best practices. Improper use or failure to adhere to the product guide may result in variations of color and mechanical properties. This product is suitable for the manufacturing of dental models such as models for crowns, bridges, implants, and aligners. LuxCreo reserves the right to change material characteristics, and formulation without prior notification.